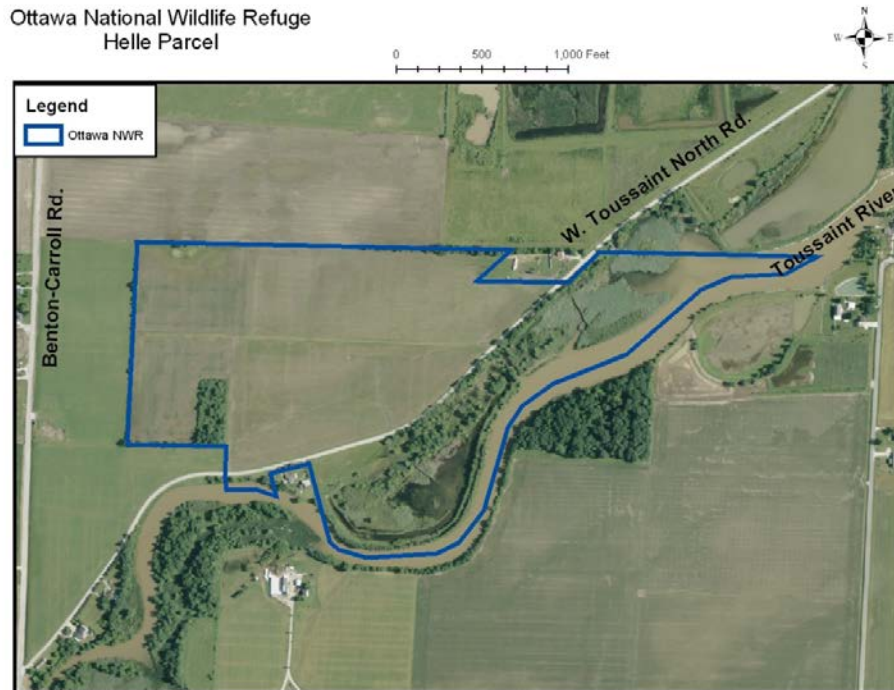


Helle Tract – Ottawa National Wildlife Refuge



On the **91-acre Helle tract**, approximately **53 acres of uplands and floodplain** will be reforested and **16 acres of wetlands** will be restored. The remaining 12 acres of the tract will be enhanced with invasive species control and through the improved hydrologic capabilities from the restoration. The following summarizes the primary actions and projected results:

- Approximately 53 acres of agricultural land currently in row crop production adjacent to the Toussaint River will be taken out of production and reforested. Native tree and shrub species characteristic of the lowlands of Lake Erie, other than those susceptible to pathogens and invasive species, such as ashes, will be used for the restoration and are available from local nurseries. Native species known to be favored by migrating landbirds, such as dogwood, hackberry, oak, and willow will be planted at a rate of 300 bare-root seedlings per acre. We will consult with the National Wildlife Federation while exploring possible species mixes resilient to climate change scenarios and future temperature gradients.
- The quality of water draining off the entire 91-acre tract will be enhanced as it is filtered through the restored wetland by reengineering a small existing channel to direct water from the tract to flow into the restored 16-acre wetland.
- The project will provide the following benefits: water quality, enlarged floodplain, and increased wildlife and migratory bird stopover habitat. The water control structure placed at the river will also provide fish passage.