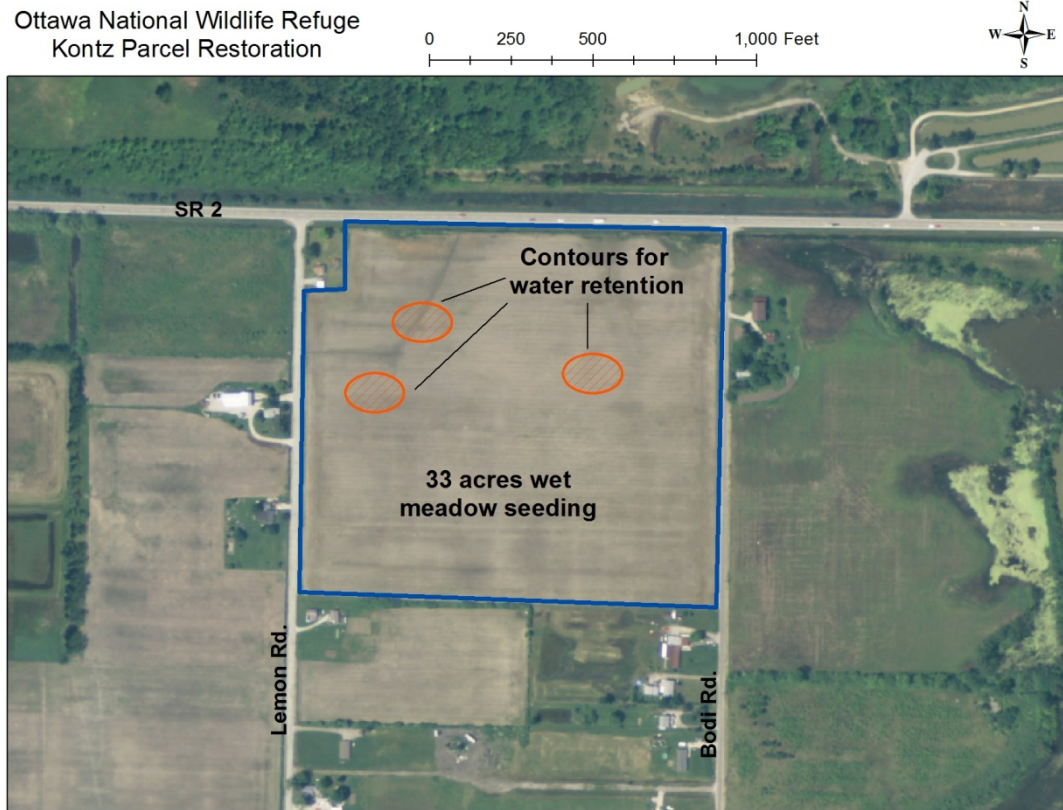


## Kontz Tract – Ottawa National Wildlife Refuge



On the **70-acre Kontz tract**, approximately **33 acres of wetlands** will be reseeded to wet meadow and several shallow wetlands will be excavated to retain water during spring for migrating shorebirds. The following summarizes the primary actions and projected results:

- Approximately 33 acres agricultural land currently in row crop production near Turtle Creek will be taken out of production and restored by removing invasive species and reseeding native species characteristic of ephemeral wetlands, wet meadows, and seasonally flooded prairies.
- Shallow contours will be excavated within the unit to provide standing water and mud flats to migrating shorebirds and breeding marsh birds.
- The project will provide the following benefits: water quality, and critical migration stopover and breeding habitat for marsh birds (e.g., black-crowned night heron, king rail), waterfowl (e.g., wood duck, American black duck, blue-winged teal), songbirds (e.g., willow flycatcher, rusty blackbird) and other avian species, as well as habitat for eastern fox snake and Blanding's turtle and other non-avian species.