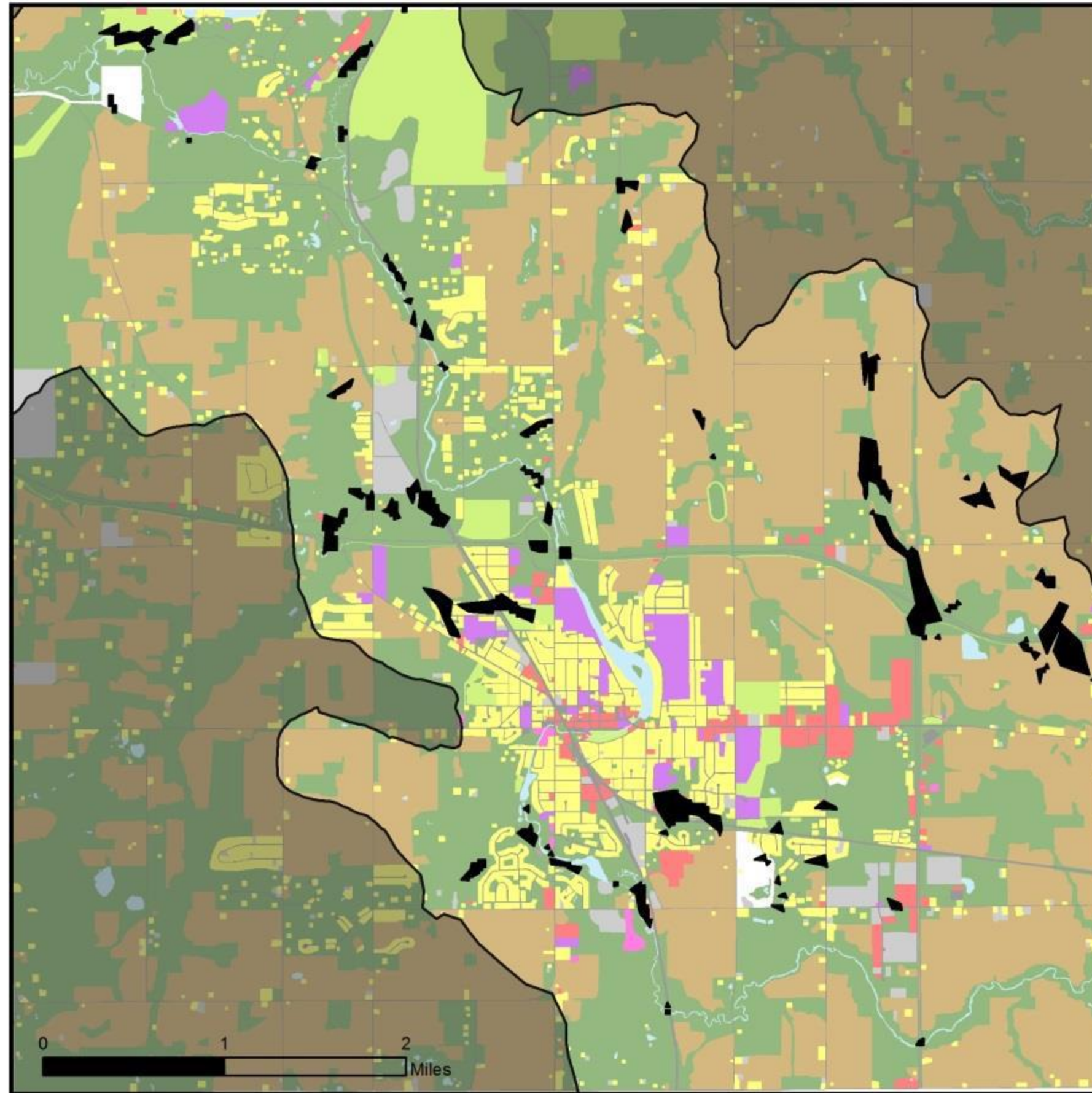


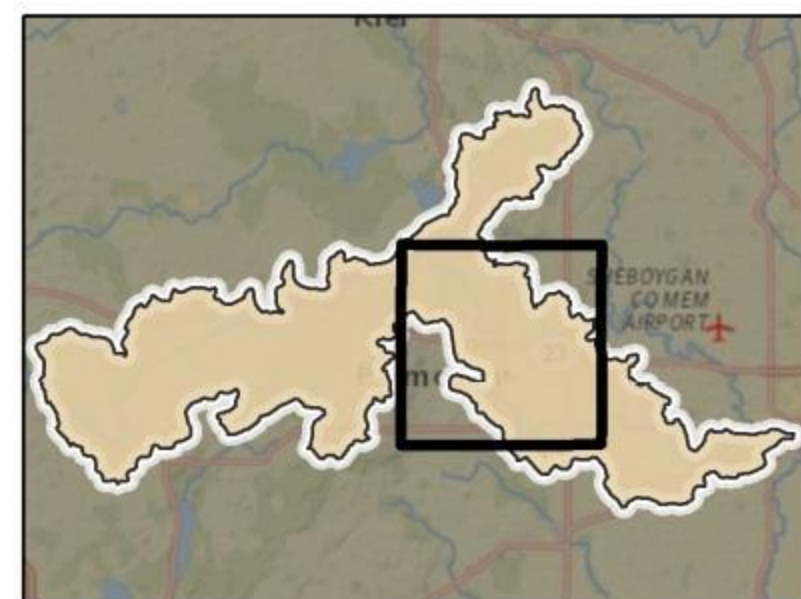
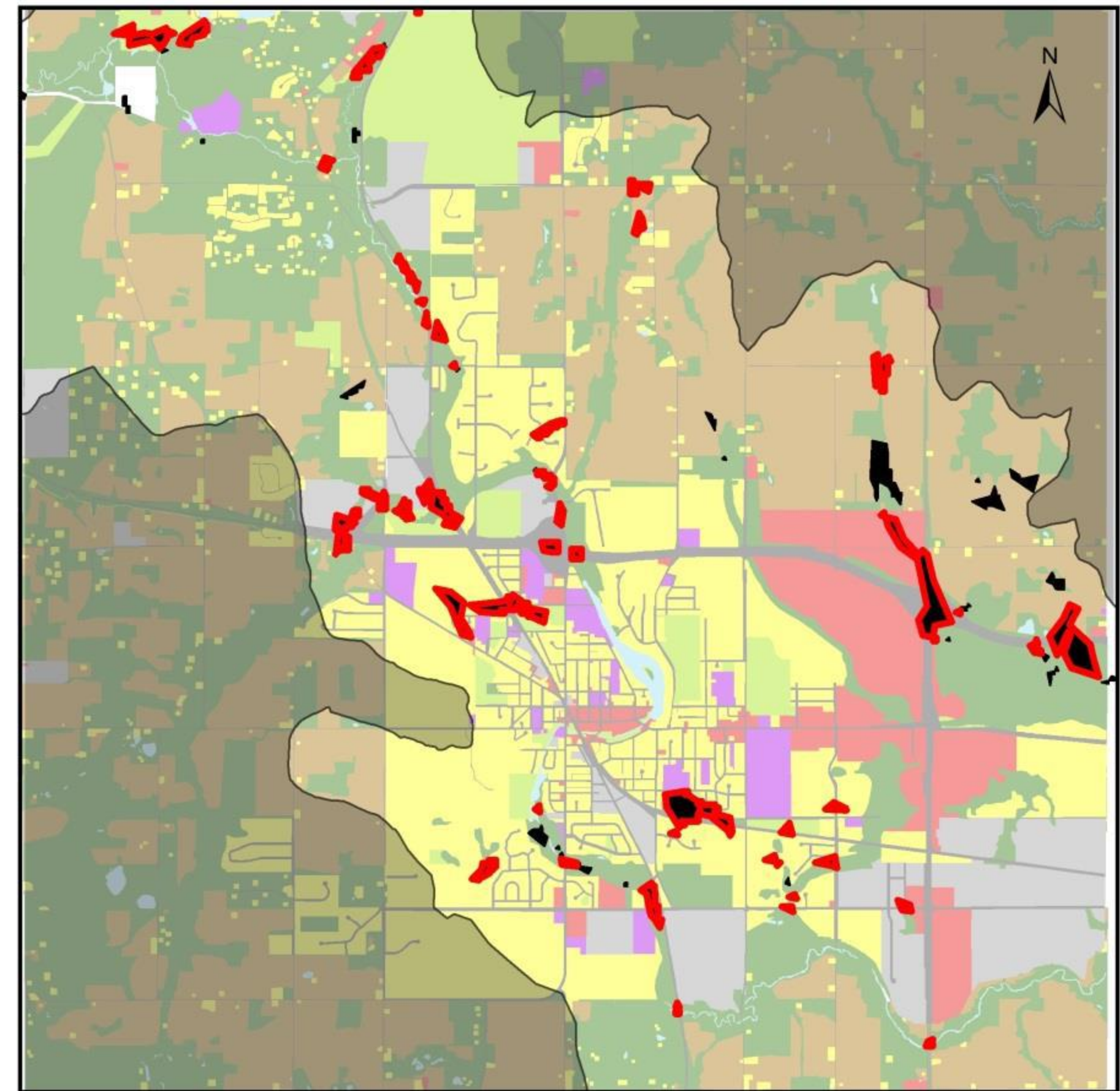
# Potential Development Pressures on Multi-Beneficial PRW




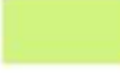








## Plymouth, WI

Current Landuse



Projected Landuse in 20 yrs



- |                                                                                                              |                                                                                                                       |                                                                                                                               |
|--------------------------------------------------------------------------------------------------------------|-----------------------------------------------------------------------------------------------------------------------|-------------------------------------------------------------------------------------------------------------------------------|
|  Residential             |  Governmental/Institutional      |  Valuable Multiple Benefit PRW           |
|  Commercial              |  Parks & Recreation              |  Mullet Watershed                        |
|  Industrial              |  Open Space, Wetlands, Woodlands |  Priority PRW that Intersect Development |
|  Roads & Transportation  |  Agricultural                    |                                                                                                                               |
|  Communitation/Utilities |  Water Features                  |                                                                                                                               |

Of 154 acres of PRW within Plymouth that were identified as multi-beneficial by the assessment, 120 acres (nearly 78%) could be potentially threatened by future development expected to occur within the next two decades.