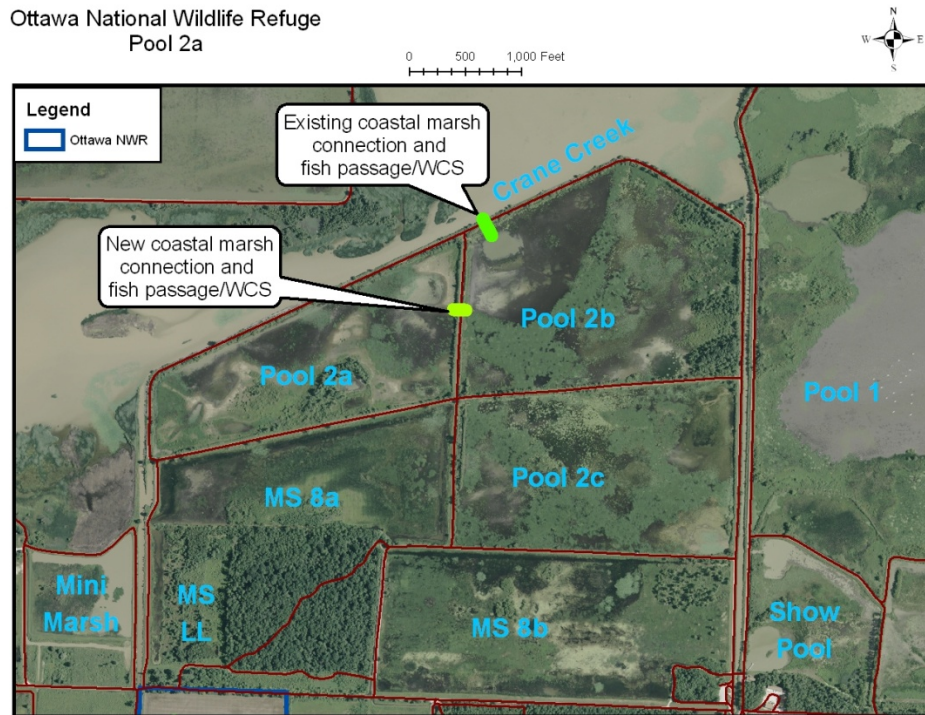


Pool 2a – Ottawa National Wildlife Refuge



On the **70-acre Pool 2a** management unit , approximately **70 acres of wetlands** will be enhanced. The following summarizes the primary actions and projected results:

- Approximately 70 acres of existing wetlands will be enhanced by constructing a new coastal marsh connection between Pool 2a and Pool 2b, the latter of which is already reconnected to the Crane Creek estuary. A box culvert design with stop logs will likely be used, thereby allowing fish passage and natural water fluctuations with the estuary and nearby Western Lake Erie.
- The project will provide the following benefits: water quality, coastal marsh connection and fish passage for a plethora of species, and critical migration stopover and breeding habitat for marsh birds, waterfowl, and other avian species, as well as habitat for eastern fox snake and Blanding’s turtle and other non-avian species.

Invasive plant (e.g., *Phragmites*) control and management will be enhanced within the four wetlands by the designed hydrologic management options. Furthermore, a total of ~\$28,000 (almost all of which is covered by dedicated match) for herbicide treatments has been included in the project budget to abate colonization during construction/restoration. After the project is completed, long term invasive plant monitoring and management will be implemented by ONWR staff, and may be supplemented by aerial spraying, if needed, by the Ohio Department of Natural Resources through an ongoing cooperative program with the refuge.